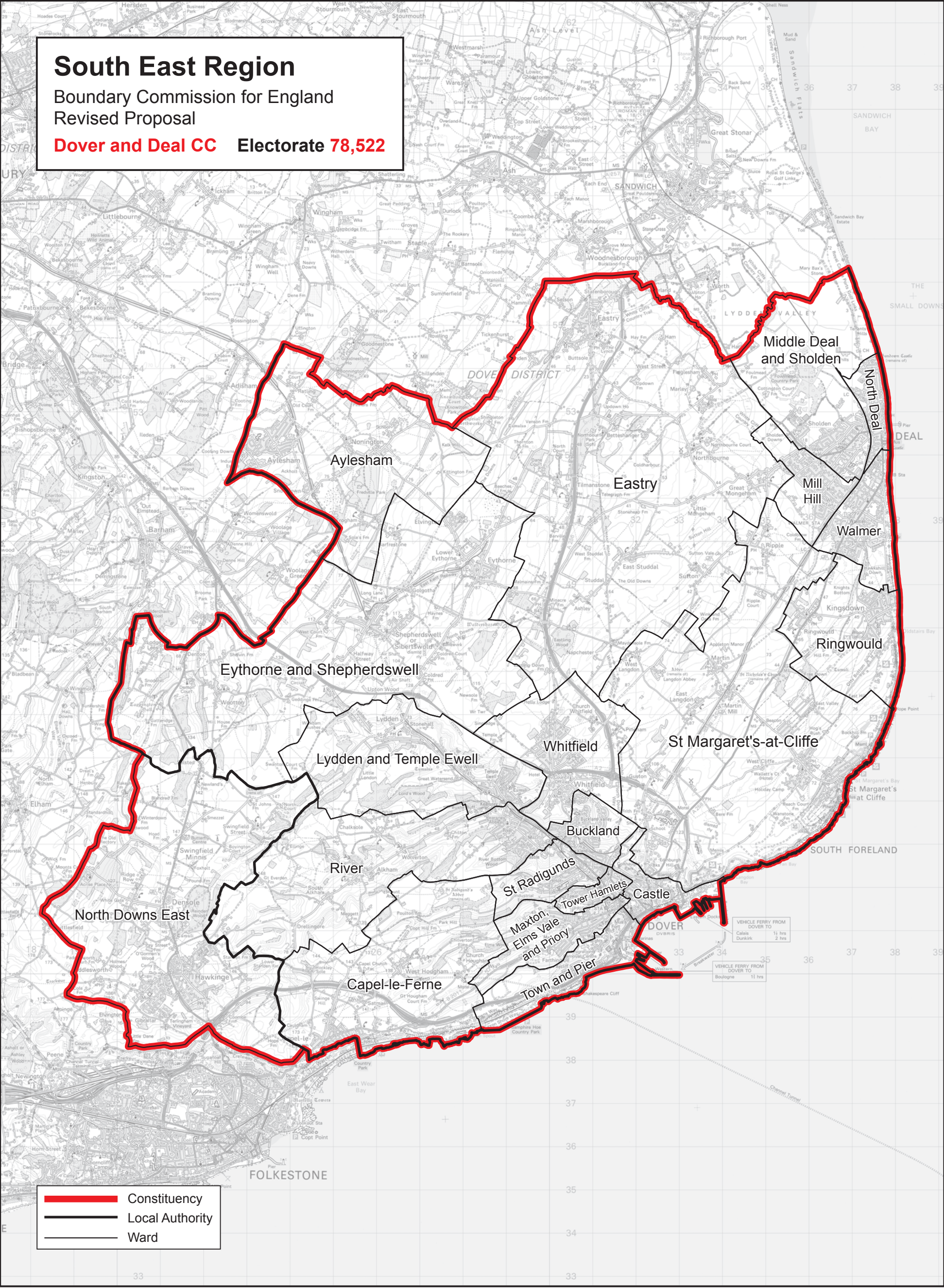




# South East Region

Boundary Commission for England  
Revised Proposal

**Dover and Deal CC**    **Electorate 78,522**



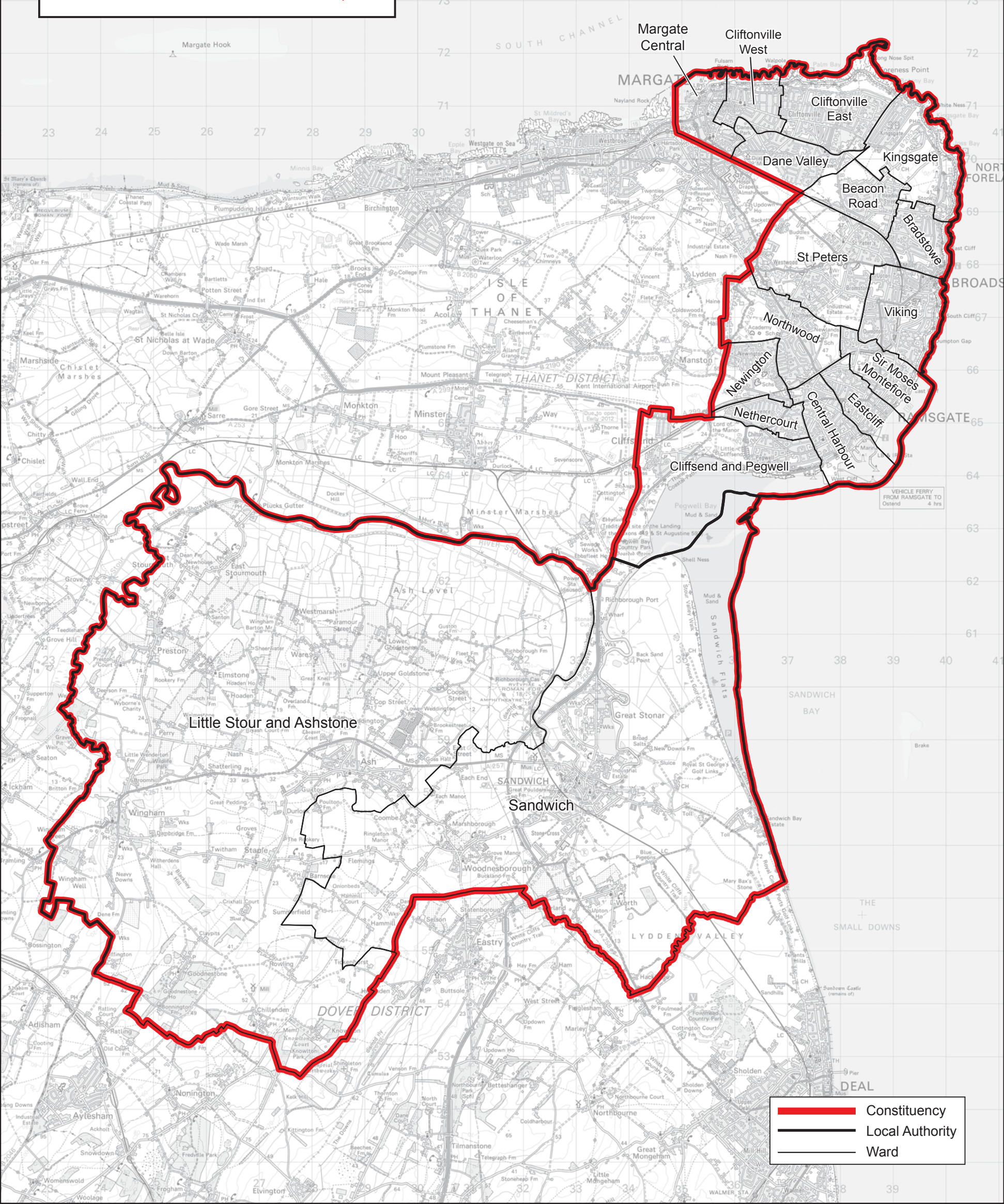
This mapping extract has been produced from Ordnance Survey's mapping data on behalf of the Boundary Commission for England © Crown copyright 2012.



# South East Region

Boundary Commission for England  
Revised Proposal

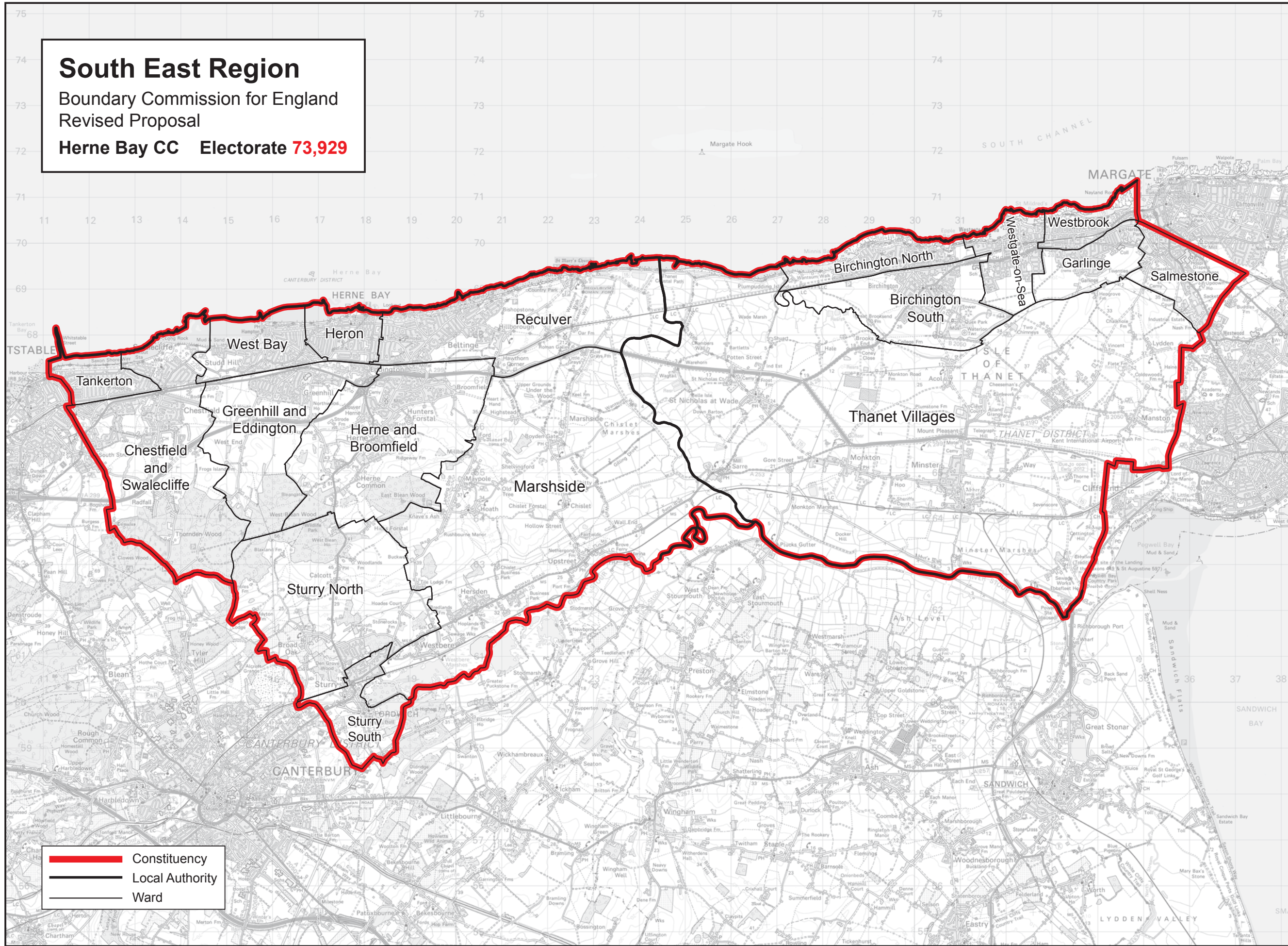
**East Thanet CC**    **Electorate 76,021**



This mapping extract has been produced from Ordnance Survey's mapping data on behalf of the Boundary Commission for England © Crown copyright 2012.



**South East Region**  
Boundary Commission for England  
Revised Proposal  
**Herne Bay CC    Electorate 73,929**



This mapping extract has been produced from Ordnance Survey's mapping data on behalf of the Boundary Commission for England © Crown copyright 2012.